

**Cerberus Polyclonal Antibody**  
**Catalog # AP73593****Specification**

---

**Cerberus Polyclonal Antibody - Product Information**

Application	WB, IHC-P
Primary Accession	<a href="#">O95813</a>
Reactivity	Human, Rat
Host	Rabbit
Clonality	Polyclonal

**Cerberus Polyclonal Antibody - Additional Information****Gene ID** 9350**Other Names**

CER1; DAND4; Cerberus; Cerberus-related protein; DAN domain family member 4

**Dilution**

WB~~Western Blot: 1/500 - 1/2000. IHC-p: 1/100-1/300. ELISA: 1/20000. Not yet tested in other applications.

IHC-P~~N/A

**Format**

Liquid in PBS containing 50% glycerol, 0.5% BSA and 0.09% (W/V) sodium azide.

**Storage Conditions**

-20°C

**Cerberus Polyclonal Antibody - Protein Information****Name** CER1**Synonyms** DAND4**Function**

Cytokine that may play a role in anterior neural induction and somite formation during embryogenesis in part through a BMP- inhibitory mechanism. Can regulate Nodal signaling during gastrulation as well as the formation and patterning of the primitive streak (By similarity).

**Cellular Location**

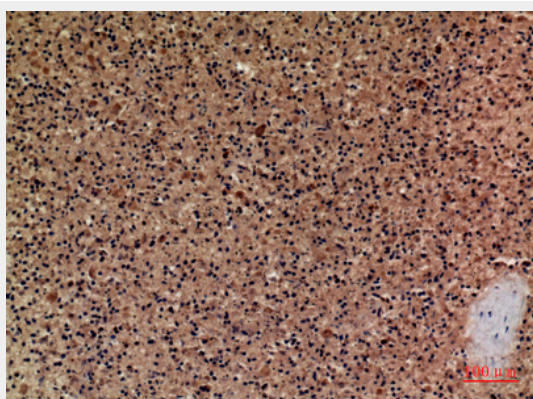
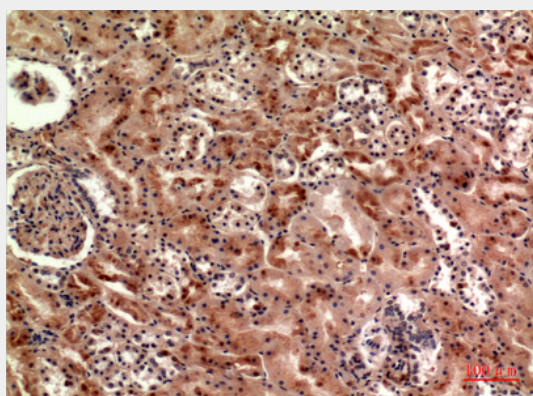
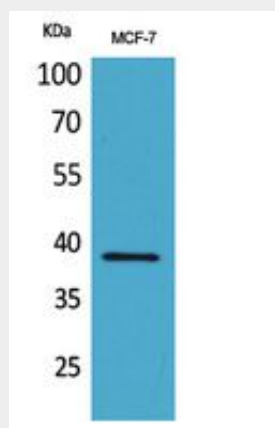
Secreted.

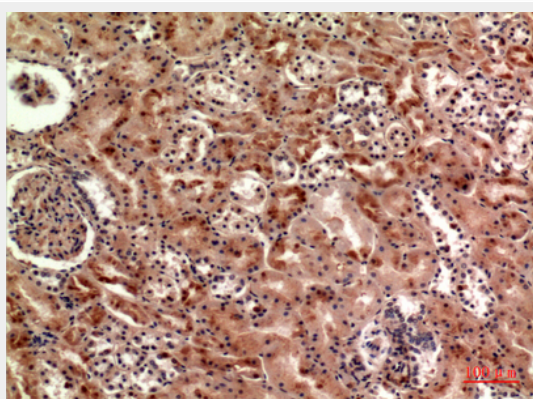
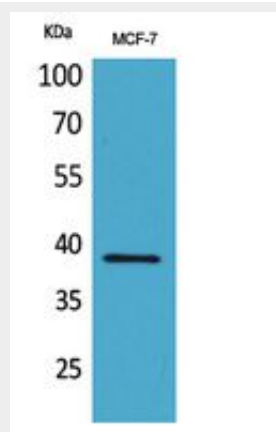
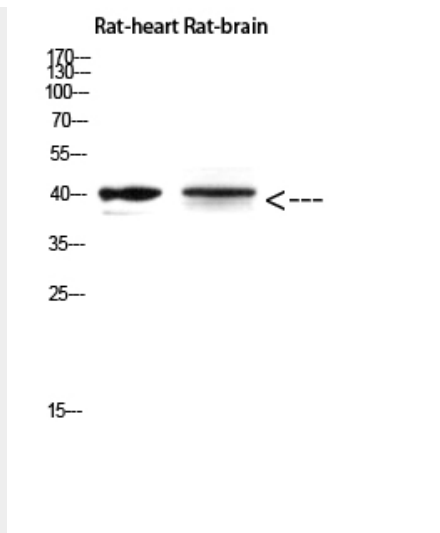
**Cerberus Polyclonal Antibody - Protocols**

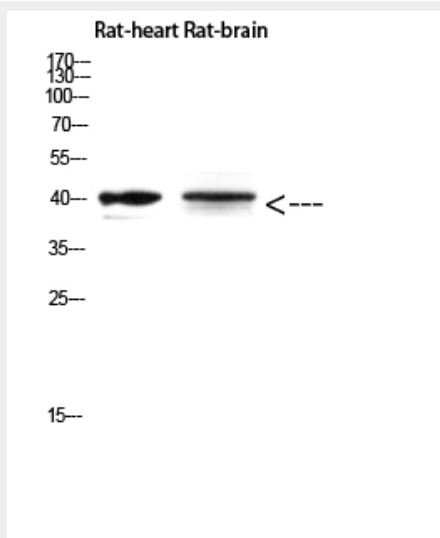
Provided below are standard protocols that you may find useful for product applications.

- [Western Blot](#)
- [Blocking Peptides](#)
- [Dot Blot](#)
- [Immunohistochemistry](#)
- [Immunofluorescence](#)
- [Immunoprecipitation](#)
- [Flow Cytometry](#)
- [Cell Culture](#)

### Cerberus Polyclonal Antibody - Images







### Cerberus Polyclonal Antibody - Background

Cytokine that may play a role in anterior neural induction and somite formation during embryogenesis in part through a BMP-inhibitory mechanism. Can regulate Nodal signaling during gastrulation as well as the formation and patterning of the primitive streak (By similarity).